



PRESIDENT & CEO

Lonnie Childress - lonnie@qisinspection.com

CHIEF OPERATING OFFICER

Mike Grider - mike@qisinspection.com

PERSONNEL DIRECTORS

Monte Wallace - monte@qisinspection.com

Arlen Kauffman - arlen@qisinspection.com

Clark Purdy - clark@qisinspection.com

Chan Huffman - chan.huffman@qisinspection.us

Mike Roche - mike.roche@qisinspection.us

**OPERATOR QUALIFICATIONS /
SAFETY COORDINATOR**

Dominic DeJoseph - dominic@qisinspection.com

OFFICE MANAGER

Jennifer Bayless - jennifer@qisinspection.com

VICE PRESIDENT OF OPERATIONS

Trent Mattick - trent@qisinspection.com

COMPLIANCE DIRECTOR

Jeff Gammon - jeff@qisinspection.com

COMPLIANCE & SAFETY COORDINATOR

Frank Hensley - frank@qisinspection.com

BUSINESS DEVELOPMENT

Brent Hatcher, President - brent@qisinspection.com

INSPECTION COORDINATOR

Tod Smith - tod@qisinspection.com

Duane McDowell - duane@qisinspection.com

INTEGRITY & MAINTENANCE

Ron Nutz, President - ron@qisinspection.com



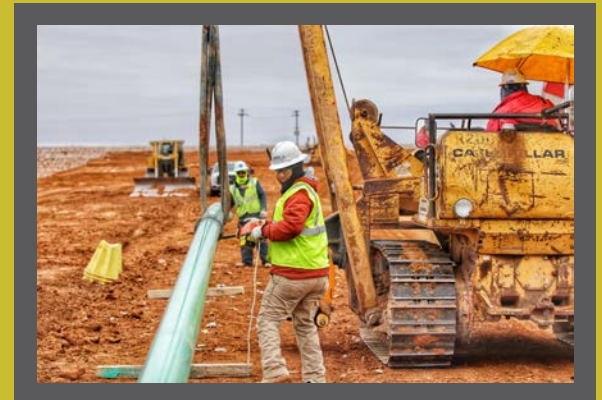
QUALITY INTEGRATED SERVICES

www.qisinspection.com

*"Quality Results in Safety,
Safety Results in Quality"*

**QUALITY INTEGRATED
SERVICES, INC.**

**INSPECTION SERVICES
FOR THE OIL & GAS
INDUSTRY**



PO BOX 1950
Guymon, OK 73942
P. (580) 468-6601
F. (580) 468-6602

809 NW 57th Street
Oklahoma City, OK 73118
P. (405) 604-9500
F. (405) 604-9090

www.qisinspection.com

Quality Integrated Services, Inc is a subsidiary of
API Group, Inc.



ABOUT US

QIS has been serving the energy business on a continuous basis since 1991. The initial services of QIS were focused on field services such as inspection of pipeline construction, compressor stations, metering/pumping stations, & tank farm facilities. Through the years, QIS has expanded its services to include project & construction management, fiber optic construction inspectors, ROW acquisition and route development, as well as, Safety and Operator Qualification training for pipeline construction personnel.

BUSINESS SUPPORT SERVICES

QIS provides a recruiting service for our clients; as well as, administrative assistance that is customized to the client's needs. We are an Administrative Service Organization (ASO) and a Professional Employer Organization (PEO). The following services are available to our customers and/or employees:

- Payroll
- Human Resources Outsourcing
- Customized Reports
- Recruiting of Personnel
- State-of-the-Art Payroll Application
- Job Costing
- Tax Filing & Withholding
- Operator Qualification Assessment
- O.S.H.A. Safety & Training
- Direct Deposit



www.qisinspection.com

INSPECTION SERVICES

- **Pipelines:**
 - New Construction
 - Integrity & Maintenance
 - Close Interval Survey
 - Rehab / Relocation
- **Offshore:**
 - Pipelines & Facilities
 - Platforms
- **Environmental:**
 - Project Management
 - Permitting & Audits
 - Wetland Delineation & Evaluation
 - Habitat Evaluation
 - Due Diligence / Construction Monitoring
- **Compressor & Meter Stations**
- **Tank Farms & Truck Terminals**
- **Distribution & Gathering Systems**
- **LNG Facilities**
- **Pipe Mill & Coating**
- **Refineries**
- **Fiber Optics**
- **Safety Inspection**
- **Fabrication Inspection**
- **Temporary Staffing**
- **Intern & Summer Staffing**



PROJECT HISTORY / EXPERIENCE

QIS maintains a multi-disciplined staff that is capable of performing both large and small projects. Although we have provided our services for two (2) of the largest pipeline projects throughout the world since the year 2000, our reputation was built on professionalism and dedication to every project regardless of size. No project is ever too small!

KERN RIVER GAS TRANSMISSION

This project consisted of 717 miles of 36" and 42" pipeline with ten (10) large compressor stations from Opal, Wyoming to Bakersfield, California. (2002 through 2004)

GULFSTREAM NATURAL GAS PROJECT

This consisted of 760 miles of 36" pipeline including 430 miles from Mobile Bay, Alabama to Tampa Bay, Florida (United States) - First pipeline of this size to cross the Gulf of Mexico. (2001 through 2003)

EL PASO PIPELINE - RUBY PIPELINE PROJECT

Between Opal, Wyoming, and Milan, Oregon, QIS provided inspection services on pipeline and compressor station facilities on the 680 miles of 42" pipeline project. (2009 through 2011)

TRANSCANADA GULFCOAST PROJECT

The southern portion of the Keystone XL is a 485-mile 36" pipeline from Cushing, Oklahoma to Nederland, Texas that was completed in 2014. This project included six (6) pump stations with the capacity to move 700,000 barrels of oil a day. (2010 through 2014)

CURRENT PROJECTS

QIS provides inspection for transmission pipelines, plant facilities & gathering systems in the following areas of the United States:

- Barnett Shale
- Eagle Ford Shale
- Haynesville Shale
- Utica Shale
- Cline Shales
- Fayetteville Shale
- Bakken Shale
- Marcellus Shale
- Mississippi Lime
- Permian Basin